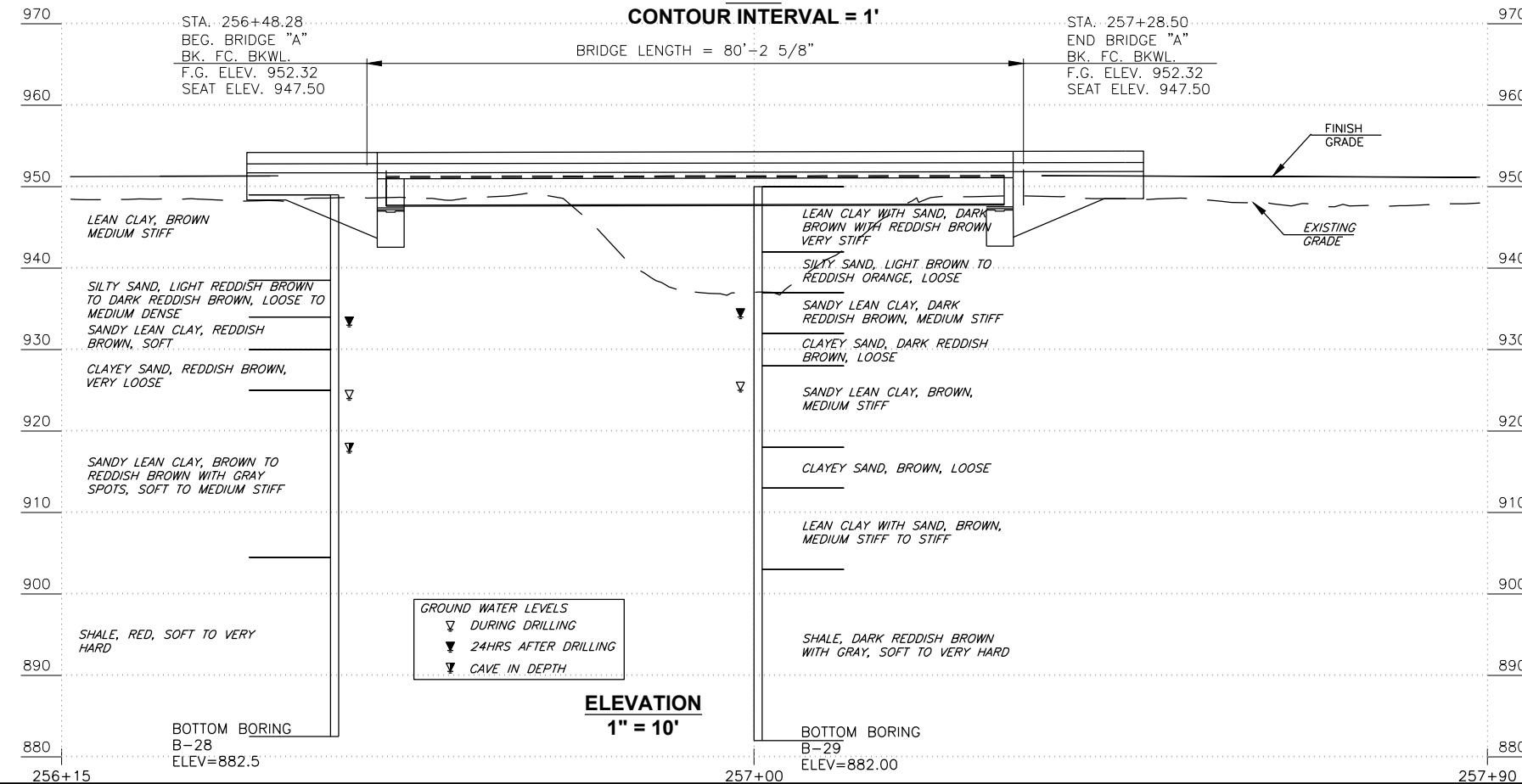


PLAN
CONTOUR INTERVAL = 1'



ELEVATION
1" = 10'

PENETROMETER RESULTS			
BORING NO. B-28			
TEST TYPE	ELEV.	RESULTS	
TC	902.5	50/2.0"	50/3.0"
TC	897.5	50/1.0"	50/0.4"
TC	892.5	50/0.4"	50/0.3"
TC	887.5	50/0.5"	50/0.5"
TC	882.5	50/0.5"	50/0.1"

PENETROMETER RESULTS			
BORING NO. B-29			
TEST TYPE	ELEV.	RESULTS	
TC	902	50/1.3"	50/0.8"
TC	897	50/1.0"	50/0.1"
TC	892	50/0.5"	50/0.5"
TC	887	50/0.8"	50/0.3"
TC	882	50/0.5"	50/0.3"

BRIDGE A: 75' X 26' CLEAR ROADWAY
CONVENTIONAL ROLLED BEAM SPAN WITH
TR3 CONCRETE RAILS 30' DEGREE
SKEW.

EXISTING BRIDGE: 35' I-BEAM SPAN.
(REMOVE)